

PITSS.CON ADF Assistant

Data Sheet

Oracle Forms to ADF Migration - Easier Than You Think

The PITSS.CON ADF Assistant is specially designed to boost productivity in transitioning legacy Oracle Forms applications to the JEE architecture, Oracle JDeveloper11g and the Oracle Application Development Framework (ADF). Besides paving the way for Oracle Forms customers to move into a new state of the art software-architecture, it also enables the integration of your application into a Service Oriented Architecture (SOA) environment.

The ADF Assistant supports the phased transition approach to JDeveloper and ADF as recommended by Oracle's statement of direction for Oracle Forms customers. By expanding the repository based PITSS.CON functionality the ADF Assistant provides not only the conversion of visual coordinates for representing a JEE-compatible interface, but also the analysis and re-engineering of critical business logic into the ADF software architecture.

Benefits

- **Guided automated transfer** of any Forms application to modern, State-of-the-Art technologies
- **Investment Protection:** the project team can concentrate on enhancing the new application, instead of re-writing business logic that has already been implemented with Forms over the last years
- **Natural Architecture:** the migrated ADF application allows easy development and maintenance by complying with the JEE architecture standards and by providing ADF code artifacts identical to the ones that would be obtained by a manual rewrite
- **No Proprietary Components:** the converted code is free of PITSS-proprietary software, which leads to minimal training and consultancy needs
- **Developer Guidance**
 - **For the Java developer:** understanding the Forms application complexity and the mapping of Forms objects to the corresponding ADF components
 - **For the Forms developer:** a phased step-by-step approach accompanied by tutorials and coaching

Key Features

Modernizing Oracle Forms applications to the JEE Architecture, Oracle Application Development Framework (ADF)

The PITSS.CON ADF Assistant offers a powerful automated process of migrating legacy Oracle Forms applications to the JEE architecture. The migration process is based on the JSF/ ADF Faces and ADF Business Components technologies, leading to a modern web application, while preserving the investment of the core functionality that has been developed in Oracle Forms over the years.

PITSS.CON ADF Assistant generates ADF applications that are compliant to Oracle's recommendations and "best practices", having a true JEE architecture, exclusively using the Oracle ADF API and metadata.

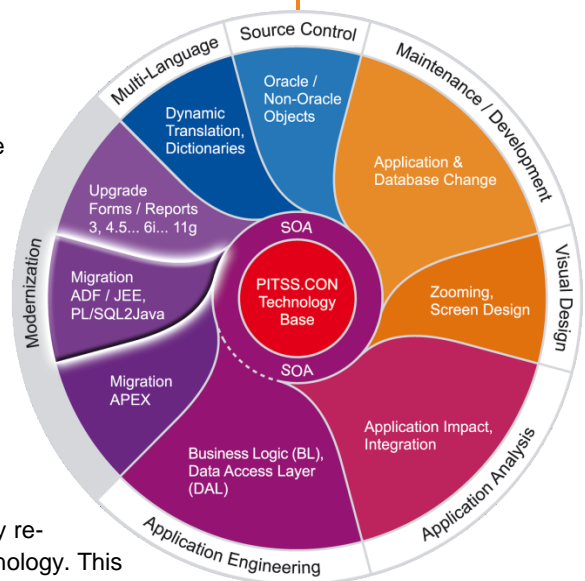
The ADF Assistant takes into consideration the architectural differences between the two frameworks, Oracle Forms and ADF, and automatically re-writes the portions of the applications that naturally fit into the new technology. This translates into significant time and budget savings.

Because the reengineered code artifacts contain no proprietary PITSS components, the generated application can simply be opened and refined within the Oracle JDeveloper IDE.

At-a-Glance

- Migration from Oracle Forms to Oracle ADF and JEE
- Unrivalled analysis capabilities for legacy Oracle Forms applications
- Re-uses business logic by migrating it to the database or to the middle-tier
- Uses Dynamical DB Logic Accessors for an easy access to database business logic
- Service Oriented Architecture (SOA)
- Converts PL/SQL code to Java
- Standards-based, native Java and XML code
- Easy-to-Use
- No proprietary components
- Protects your investment

PITSS.CON is Oracle endorsed for the modernization of Oracle Developer applications



Managing the Business Logic: Saving the Application Investment

A major component of any Oracle Forms and Reports application is the business logic. PITSS.CON ADF Assistant will reuse the business logic by distinguishing the Forms PL/SQL code between user-interface, process and core logic to map these elements to the ADF model-view-controller (MVC) software architecture:

- **The user-interface specific code** will be integrated in Java methods within the newly created ADF application. The PITSS.CON PL/SQL2Java translator will assist the code rewrite and the creation of the corresponding methods.
- **Process and Core Business Logic** code artifacts will be transferred to the database and enabled via Dynamical DB Logic Accessors, leading to well performing, easily-maintainable centralized Java and PL/SQL code.

Integration with PITSS.CON Application Analysis and Application Engineering: Preparing the Re-Engineering Process

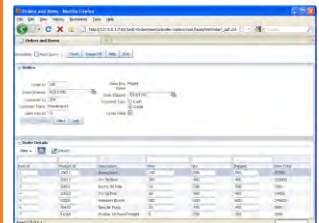
- **Application Analysis:** offers an unrivaled capacity to analyze and thoroughly understand the components and inter-dependencies of complex Oracle Forms applications, allowing the project team to re-gain control over the application.
- **Unused Objects Analysis:** finds any obsolete or unused objects, reducing the complexity and freeing the legacy application of old burdens. This allows the ADF Assistant to consider only the actively used components for the reengineering process.
- **Business Logic Assistant:** identifies the portions of code that can be transferred to the Oracle database and assists the process of code migration and re-integration.
- **Data Access Layer Assistant:** helps expose the business logic previously transferred to the Oracle database as Web Services, opening these functionalities to the outside world and a possible integration into a Service Oriented Architecture (SOA).

Intuitive, Easy-to-Use Interface

PITSS.CON ADF Assistant provides an intuitive, visual environment for managing applications, which helps developers quickly gain an overview of the entire application and perform a detailed application analysis. This translates into minimal training for both Oracle Forms and ADF specialists. By allowing a phased approach with full control over the migration process the overall risks during the transition to the state of the art ADF software architecture are greatly reduced.

Detailed Documentation: Essential for the Project Success

The result of the ADF Assistant generation process is thoroughly documented. This documentation provides a great resource for developers working on the converted application. It includes the full mapping between the initial Forms application objects and the ADF generated components and a detailed list of post generation steps to fully re-create and modernize the application.



Example of an ADF module automatically migrated with PITSS.CON ADF Assistant

PITSS in Europe
Germany
+49/ 8171/ 21 62-10
sales.eu@pitss.com

PITSS in USA
Troy, MI
+1 248 740 0935
info@pitssamerica.com

About PITSS

PITSS is the leading supplier of fully integrated solutions for effective management of Oracle Forms applications. The innovative PITSS.CON software helps customers analyze, migrate, upgrade, and maintain their Oracle Forms applications. With PITSS.CON, companies achieve an average cost savings of 30% for regular development projects and up to 90% for upgrade and migration projects. PITSS is an Oracle Certified Advantage Partner, Oracle Forms Migration Partner and has customers in Europe, USA, and Asia.

